

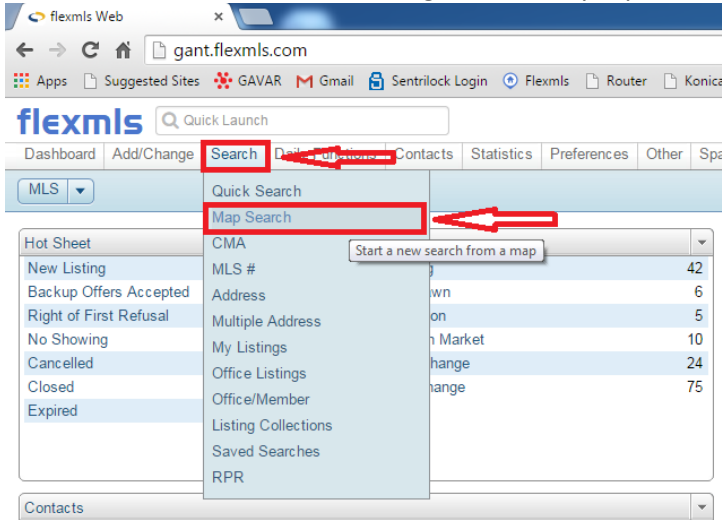
How to do Radius Search:

This Instructional guide is designed to show you how to quickly complete a radius search.

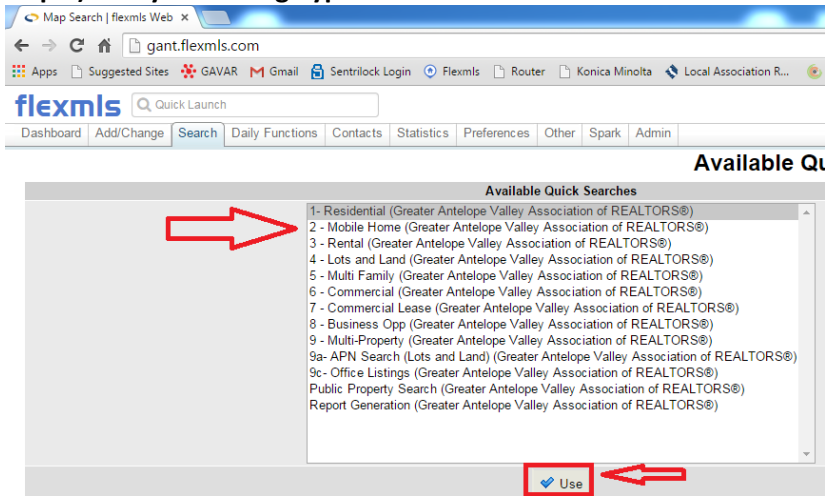
Note: Residential listings are used in this search, but this guide will work for other types of property too.

Step 1) The FlexMLS Home Page:

- From the FlexMLS home Page on the very top, click on "Search" then "Map Search".

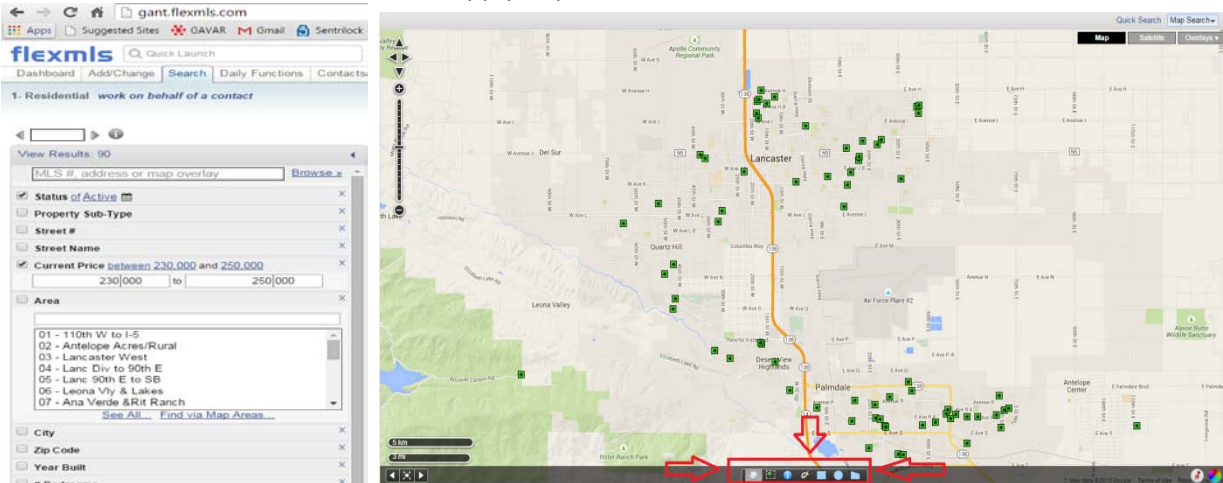


Step 2) Pick your Listing Type:



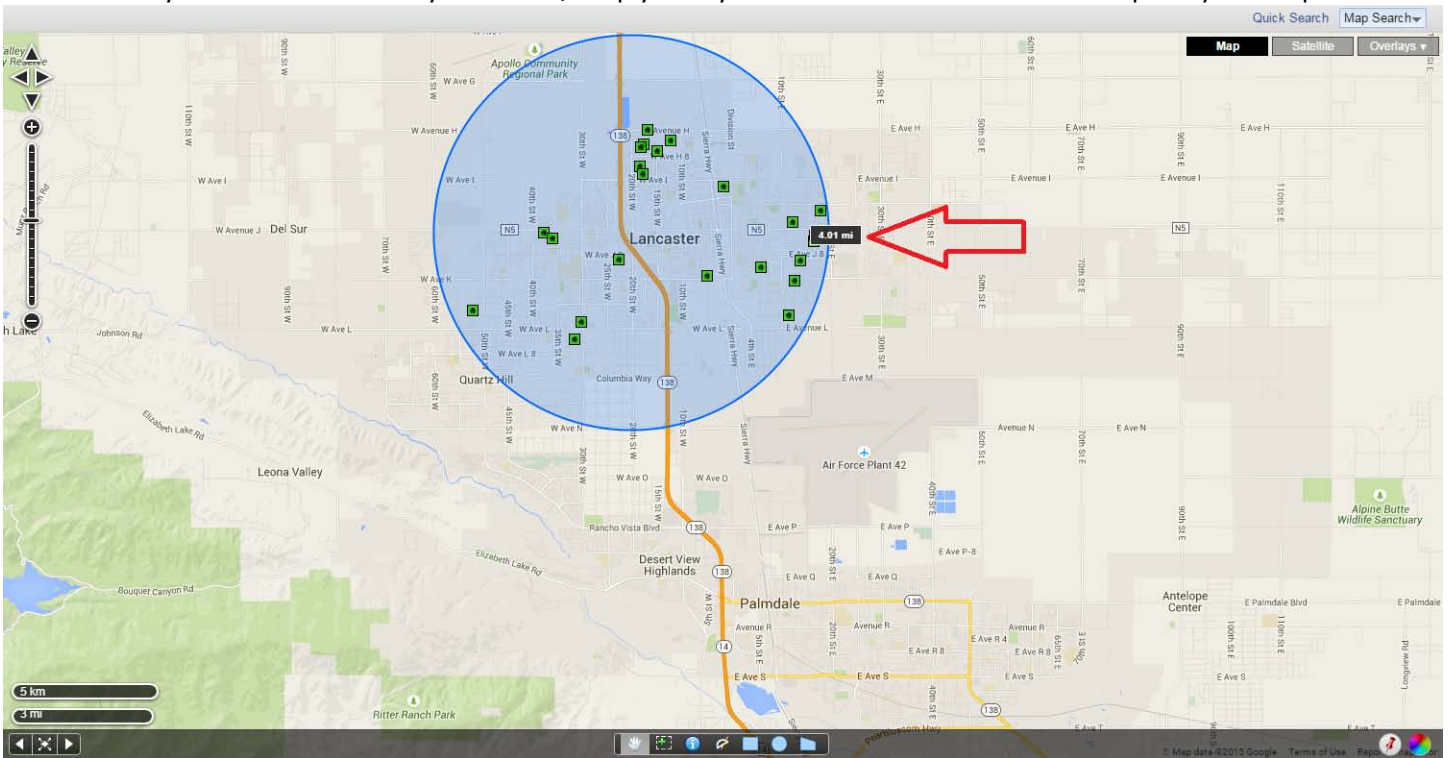
Step 3) Filtering and the Map:

- On the left side, make sure to apply any filters, and then use the radius search tools at the bottom of the map.



Step 4) Applying the Radius Search:

- Click the shape you want to apply (Try a circle or square first it is the easiest).
- After you click the shape, find a center point for your radius search then click on the map.
- Once you click the map make sure you are not still holding the left mouse button down, and drag the mouse outward from your center point.
- Once your radius is the size you want it, simply click your mouse one more time to complete your shape.



Step 5) Removing a Radius Search:

- If you are unhappy with your shape, simply go to your search criteria on the left side and click on the small "x" under the new "Shape" field:

