

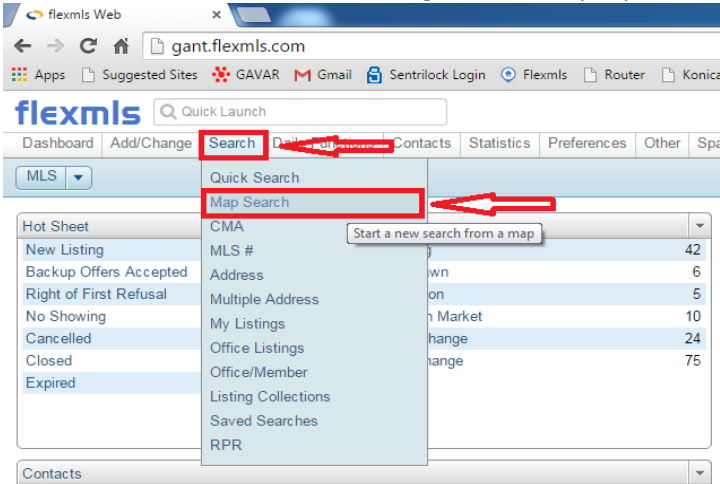
How to do Radius Search 2:

This Instructional guide is designed to show you how to quickly complete a radius search.

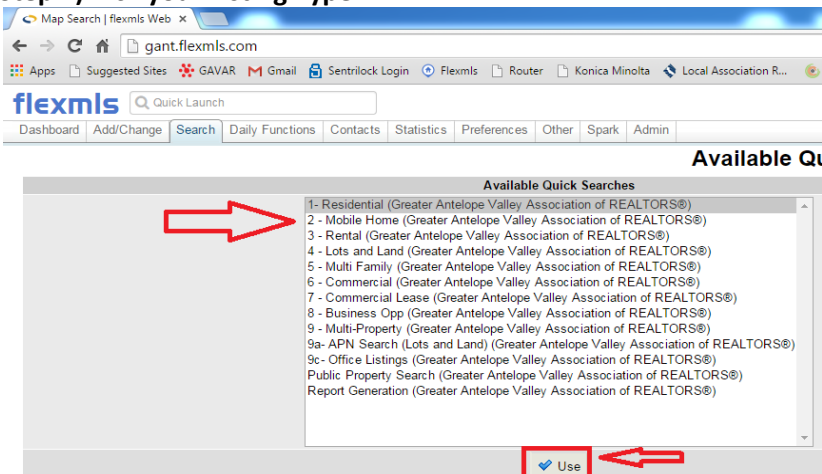
Note: Residential listings are used in this search, but this guide will work for other types of property too. In this version you will pick a listing to be the center of your radius.

Step 1) The FlexMLS Home Page:

- From the FlexMLS home Page on the very top, click on "Search" then "Map Search".

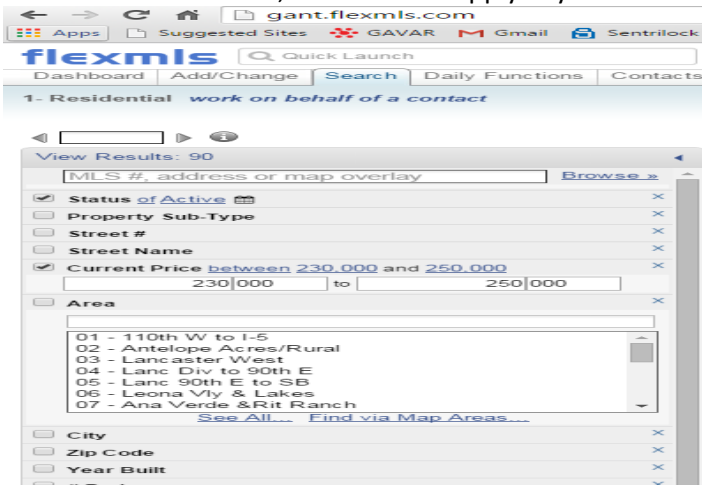


Step 2) Pick your Listing Type:



Step 3) Filtering:

- On the left side, make sure to apply any filters



Step 4) Finding a Center:

- Find a listing on the map that you would like to be the center of your search, then click on that listing:
- When you click on the listing you will notice it will turn into a star (See picture).

The screenshot shows the flexmls website interface. At the top, there is a search bar with the value "15007688" and a navigation menu with items: Dashboard, Add/Change, Search, Daily Functions, Contacts, Statistics, Preferences, Other, Spark, Admin. Below the navigation is a header "1- Residential work on behalf of a contact". The main content area is split into two panels. The left panel shows a list of search results with columns for Price, Status, and MLS #. The right panel shows a map of the Lancaster, CA area. A popup window is open over a listing at "505 W Avenue K, Lancaster, CA 93534". The popup contains the listing details and a "Listing Activity" table. A red arrow points to the "Radius Search" link in the popup. Another red arrow points to a star icon on the map, which is the listing being selected as the center.

Price	Status	MLS #
\$237,500	Active	15007176
\$237,900	Active	1413517
\$239,000	Active	15005143
\$239,000	New Listing	15007661
\$239,000	Active	15005143

Listing Activity:
15007342 06/02/2015 Active \$239,900 Select

Step 5) Pick the size of your radius search and click "Create Radius":

The screenshot shows the flexmls website interface, similar to the previous one. The search bar still contains "15007688". The map panel shows the same area of Lancaster, CA. A dialog box is open over the map, titled "Radius Search". It contains a text input field with the value "3.0" and a "Create Radius" button. A red arrow points to the "Create Radius" button. Another red arrow points to the "3.0" input field. The star icon from the previous step is still visible on the map.

Step 6) Viewing results/adjusting Radius:

- From here you can adjust your radius or simply view the results

flexmls 15007688

Dashboard Add/Change Search Daily Functions Contacts Statistics Preferences Other Spark Admin

1- Residential work on behalf of a contact

23

View Results: 21

MLS #, address or map overlay [Browse »](#)

Shape (within)
x Circle

Status of Active X

Property Sub-Type X

Street # X

Street Name X

Current Price between 230000 and 250000 X
230000 to 250000

Area X

City of Palmdale, Lancaster X

Zip Code X

Year Built X

Bedrooms X

Total Baths X

Baths - Full X

Baths - 1/2 X

Square Footage X

Lot Acres X

Lot SqFt X

Pool X

Map showing search results for 21 properties. A blue circle highlights a cluster of properties. A tooltip over the circle offers options: [Circle](#), [edit](#), [Radius Search](#), [Street View](#), [Bird's Eye](#), [Zoom Here](#).

Step 7) Removing a Radius Search:

- If you are unhappy with your shape, simply go to your search criteria on the left side and click on the small "x" under the new "Shape" field:

flexmls Quick Launch

Dashboard Add/Change Search Daily Functions Contacts

1- Residential work on behalf of a contact

23

View Results: 23

MLS #, address or map overlay [Browse »](#)

Shape (within)
x Circle

Status of Active X

Property Sub-Type X

Street # X

Street Name X

Current Price between 230,000 and 250,000 X
230,000 to 250,000

Area X

01 - 110th W to I-5
02 - Antelope Acres/Rural
03 - Lancaster West
04 - Lanc Div to 90th E
05 - Lanc 90th E to SB
06 - Leona Vly & Lakes
07 - Ana Verde & Rit Ranch

[See All...](#) [Find via Map Areas...](#)